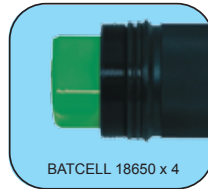


### Replacing the Battery Pack Inside the Body

- Unscrew the body and then slide out the old battery pack.



### Choosing between 4-Levels and SOS of output

- Press the push button every time to choose the desired output level : I- output at 10%, II-output at 25%, III-output at 50%, IV-output at 100%.
- For 4-Levels setting, press the push button each time to change the level of output accordingly.
- For SOS setting, press the push button for 2 sec to get SOS effect and back to normal when you press the push button once again.
- For OFF setting, press the push button one time after 1 sec of level selection or press the push button five times after 4-Levels setting.



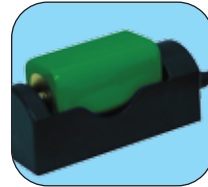
### Battery level indicator built-in

- Color of LEDs change from the time being. It will change from blue to green and green to red. When the red led flashes, it reminds people to charge up the battery.



### Charging the Battery

- Place the Li ion battery inside the Smart Quick Charger. There is no need to discharge after use.
- Charge time will depend on the remaining capacity in the battery and the surrounding temperature.



### Maintenance and Transportation

- After each dive, always rinse with fresh water. If the diving light will not be used for a prolonged period of time (more than a month), remove the battery from the light.
- In rare cases of flooding, discontinue use. Turn the light off immediately and rinse with fresh water. Let the components dry completely, and return it to Bigblue for service.
- Flooding damage cannot be repaired on site.

### Clean the light and Lubricate the O-Ring

- For good practice, put the light into fresh water for few hours after every dive.
- Dry it out and put the silicone grease on the O-Ring. Ready for other dive.

### Mounting the Goodman Glove



Aluminum Adapter plate



Fix the plate with the supplied screw



Goodman Glove



Put the Velcro through the slot of the plate and through the loop



Tighten by pulling the Velcro

### Setup Using Handle

- The light comes with handle



### Technical Specifications

Light Source	4 x XML LED
Light Output	480 Lm ( level I), 1200 Lm ( level II) 2400 Lm ( level III) , 4800 Lm ( level IV)
Casing Material	Aluminum alloy. Anti-corrosive anodized
Power Source	Li ion Rechargeable battery pack BATCELL 18650 x 4
Angle of Light Beam	10° narrow beam
Color Temperature	6500K
Burn Time	2 hrs ( level IV), 4 hrs( level III) 8 hrs(level II) and 20 hrs ( level I)
Maximum Depth	100m tested
Size:	Dia. 72 x L. 150.3mm
Weight in Air	596g (including battery)
Buoyancy in Sea water	-222g (including battery)
Switching System	Push button with battery indicator
Front Glass	Tempered optical glass
Lanyard	Included

## TL 4800P

### Li ion Rechargeable Battery High Power LED Tech Light



Specifications subject to change without prior notice

Congratulations on your purchase of our Bigblue product. The Bigblue Diving Light uses carefully selected materials that have met rigorous industry standards. With innovative manufacturing processes, and strict quality controls, we guarantee the reliability of all Bigblue diving products.

### Introduction

The TL 4800P delivers a stunning 4800 lumens light output 4 x ultra high intensity LED. It is a compact and versatile technical diving light with strong penetrating hot spot and a wide and even periphery light beam, best suitable for technical diving. Combined with the self-contained 18650 x 4 Li ion rechargeable battery design, it actualizes the super convenience and performance which can meet the needs of discerning professional divers.



### Bossk International Company Limited

Tel : (852) 3568 0773  
 Email : customerservice@bigblue.com.hk  
 Web : www.bigblue.com.hk  
 MADE IN CHINA Patent Pending

### Limited Warranty

1. Bigblue guarantees the proper operation of this product by the original retail purchaser under normal and intended use.
2. This warranty applies only to the original retail purchaser, which does not apply to commercial or rental use, nor is it transferable to third parties.
3. If the original retail purchaser detects defect in the materials or workmanship, return the product together with proof of purchase indicating the date of purchase to an authorized Bigblue dealer or Bigblue.
4. The warranty covers a period of up to one (1) year from the date of purchase. Warranty for rechargeable battery pack is valid for six (6) months only.
5. This limited warranty is in lieu of all other warranties. No other person or party is authorized to assume for Bigblue any other liability in connection with the sales of this product.
6. This warranty will be voided if the product or any of its parts have been tempered with, repaired, modified, transformed, adapted or damaged without authorization by Bigblue.
7. This warranty does not cover parts subjected to normal wear and tear, including and is not limited to the following: O-rings, battery pack, front glass (surface scratch or damage on impact).
8. This warranty does not cover damages due to impact, use in chlorinated or polluted waters, and extended exposure to heat sources.

### Using the rechargeable Li ion battery

- Intended to be used with the custom-made 18650 x 4 Li ion rechargeable battery only.
- Connect with the correct polarity (+ and -) only, incorrect connection can damage the unit.
- Fully charge the batteries before using for the first time. Use only the power adapters supplied with the charger.
- Using incompatible adapters may damage the charger or result in fire or electric shock.
- Charge time will depend on the remaining charge in the battery and the surrounding temperature.
- Do not charge near hot temperature, under direct sunlight, cover the charger with a blanket, or place under heavy pressure. If the temperature is too high, it may cause the battery to leak or rupture.
- When storing or carrying the battery, avoid direct contact with metal objects to avoid short circuit.
- The Li ion battery should not be dropped or be subjected to strong mechanical shock.
- Remove the battery from the light if it is not going to be in use for an extended period of time.
- Do not operate the battery or the charger if it has been damaged or subjected to shock.
- Do not dispose of in fire. Do not heat, deform, solder, disassemble or modify.
- Do not dispose of your rechargeable battery with general household waste. Check with your local collection system for electrical and electronic products.

### Li ion battery charge and care

1. Fully charge the battery before using it first time.
2. Use only the power adapter supplied with the charger.
3. Plug in the charger before you place the battery in the charger.
4. Make sure to connect with the correct polarity. Incorrect connection can damage the unit.
5. The red light on the charger will light up after a short time, indicating charging is taking place. If the red light does not light up, disconnect the battery and re-connect it again. If the red light does not light up after several attempts, the battery does not function.
6. Green light on the charger indicates fully charged battery. The battery should then be disconnected.
7. Charge the battery after each use. It does not have to be discharged before charging. Should charge the battery every month even you don't use it.
8. Do not turn on the light, if the light has turned off due to low battery capacity. Turning on the light with a fully discharged battery can damage the battery.
9. Charge time will depend on the remaining charge in the battery and the surrounding temperature
10. Remove the battery from the light if it is not going to be used for extended period of time



# TL 4800P

4800 lumens Li ion Rechargeable Battery High Power LED Tech Light

### INSTRUCTION MANUAL



- 4 x ultra high intensity LED delivers 4800 lumens, and an 10° hot spot, making it an ideal technical light for the most demanding technical divers.
- The LEDs are maintenance-free, they guarantee a burn time of 50,000 hours, reducing the need for frequent bulb replacement.
- The 6500K white light reflects the true vibrant colors of the underwater surrounding while diving.
- The four levels power output lets you choose between 100%, 50%, 25% and 10% of total brightness.
- The push button not only makes it easy to change between the power output levels, but it is also designed to be insulated from all internal parts, eliminating the risk of leakage.
- Li ion rechargeable battery design comes with a smart charger, enabling you to charge in a few hours.
- Sturdy glove for hands-free operation underwater.
- The thermal protection system prevents the light from overheating by automatically cutting off its power in case of prolonged use on land, or exposure to temperatures above 70°C. As soon as the light cools off, power comes back on.



Goodman glove for hands-free operation